

“LUNA” SYSTEM

<p>SYSTEM TYPE:</p> <ul style="list-style-type: none"> - Hidden anchors 	<p>CLADDING SLABS TYPOLOGY:</p> <ul style="list-style-type: none"> - Ceramic tiles, simple or multi-layer; - Laminate boards or tiles; - Fibrocement boards or tiles; - Other thin materials on which is possible to put backside mechanical anchors;
<p>WORKING ON TILES:</p> <ul style="list-style-type: none"> - backside mechanical anchors 	

SYSTEM COMPONENTS:

The “Luna” system is made of these components:

- extruded profile type “L1” in aluminium alloy EN 6060 T5 (or similar, when needed);
- mechanical conic inserts fixed on the backside of the cladding tile, or other kind of insert, appropriate for cladding material, when needed;
- Hooks “T6/20” fixed to the slabs and fixed on the “L1” profile, in stainless steel EN 1.4310 (AISI 304)
- standard supporting L brackets type “A13” e “B13”, in aluminium alloy EN 6060;
- nuts and bolts to fix “L1” profile on the brackets, in stainless steel class A2;
- anchors to fix the brackets on the wall, mechanical or epoxy-resin based, as needed;

SYSTEM DESCRIPTION:

The vertical rail “L1” is placed on the wall, with a pace depending on the slabs width and the vertical joint between them.

The “L1” vertical profile is designed and shaped in order to fit without drillings the following components:

- the brackets supporting vertical rails on the wall, put in place with their design pace;
- the hooks “T6/20” to support and fix the tiles;
- the insulation springs, if needed.

The cladding tiles are pre assembled on the ground by fixing the “T6/20” hooks on the conic inserts, which are previously placed on the backside of the tiles. Once the tiles are correctly assembled, each tile can be set-up or dismantled separately on the aluminium structure by putting a “T6/20” hook in an appropriate channel on the “L1” rail.

A few points of structural adhesive are placed on the lateral wings of the profile to stabilize the tile.

This arrangement of the components protects the coatings (oxidation or painting) from corrosion and assure to the structure a longer lifetime.

This “Luna” system makes possible to set up medium/large ceramic tiles by a completely invisible system, but requires that each tile has a certain number of mechanical anchors on the backside, near the lateral edges. This anchors receive the hooks “T6/20” which are fixed directly on the vertical profile; the fixing devices number depends on tiles dimensions and wind loads.

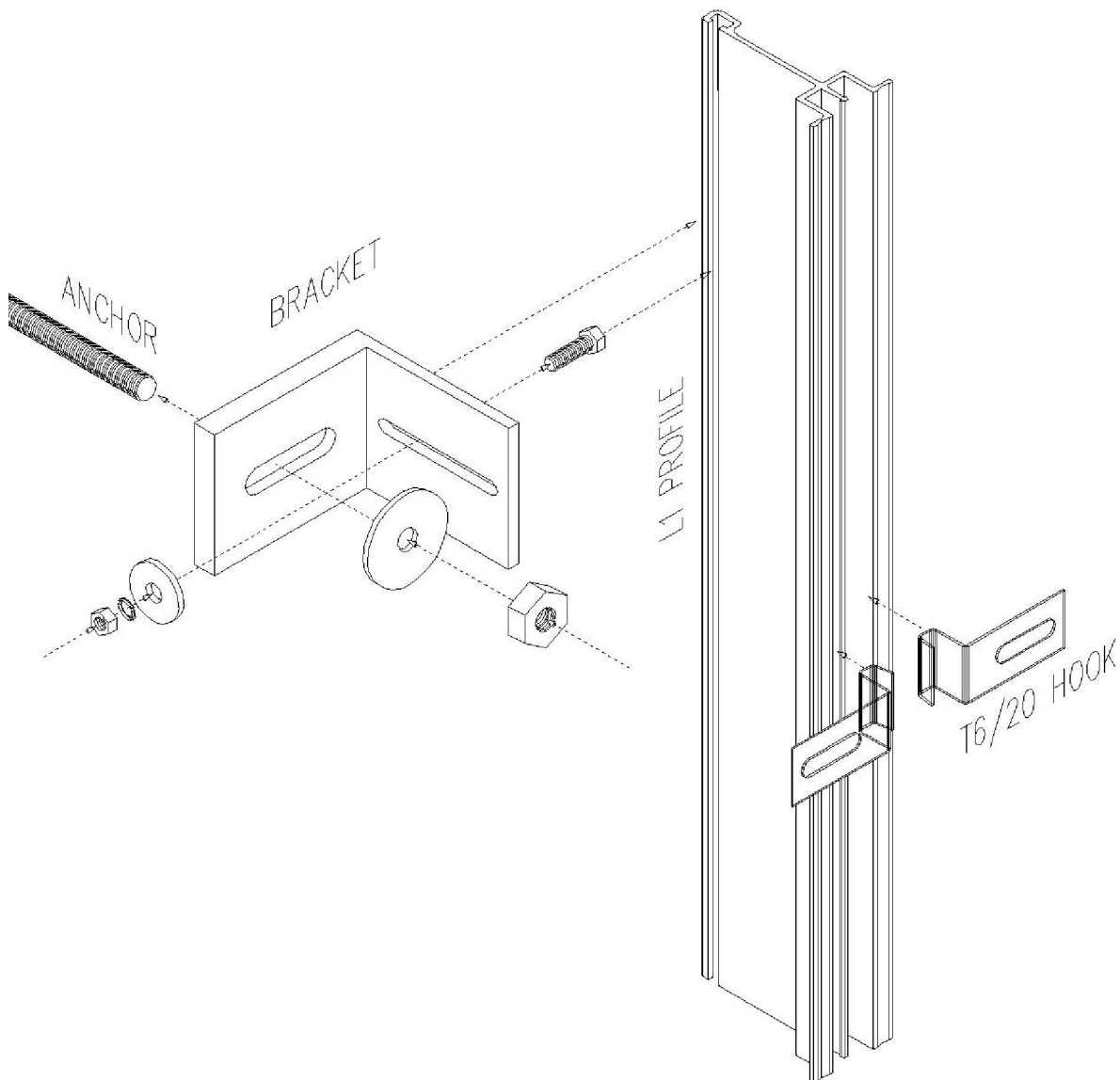
When all the components are put in a proper place, each tile can be set up or dismantled one at a time.

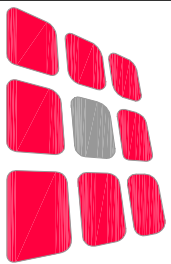
The supporting structure makes possible any type of regulation and it is able to resist the wind load and to allow the thermal expansion of all components.

SYSTEM SIZES:

The standard distance between the wall and the back side of the tile is 128 mm, with a standard regulation of ± 25 mm. (If the tile is 10 mm thick, this position matches a standard distance between the wall and the external face of the tile of $142 \text{ mm} \pm 25 \text{ mm}$).

The standard thickness of the slabs for this system is from 8 mm to 14 mm average.





DALLERA

Tecnologie S.r.l.

Società unipersonale

Via Trivulzina, 13/48 - Pad. 20 - 20864 Agrate Brianza (MB)

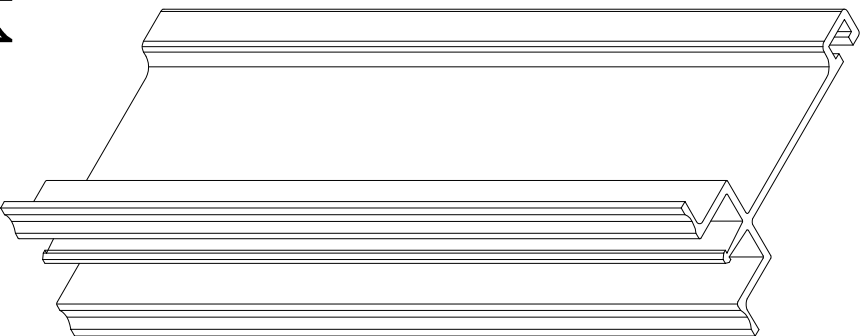
Tel. 039 9711592 - Fax 039 9711593

www.dalleratecnologie.it

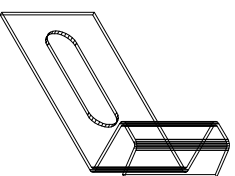
info@dalleratecnologie.it

"LUNA" SYSTEM

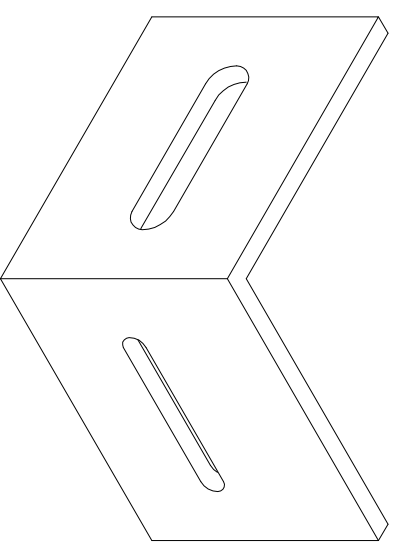
STANDARD COMPONENTS



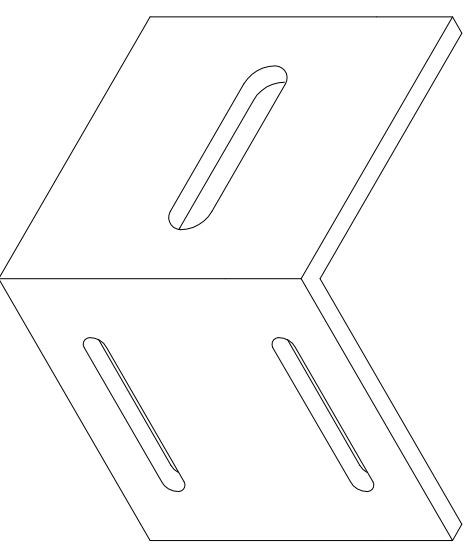
L1



T6/20 HOOK



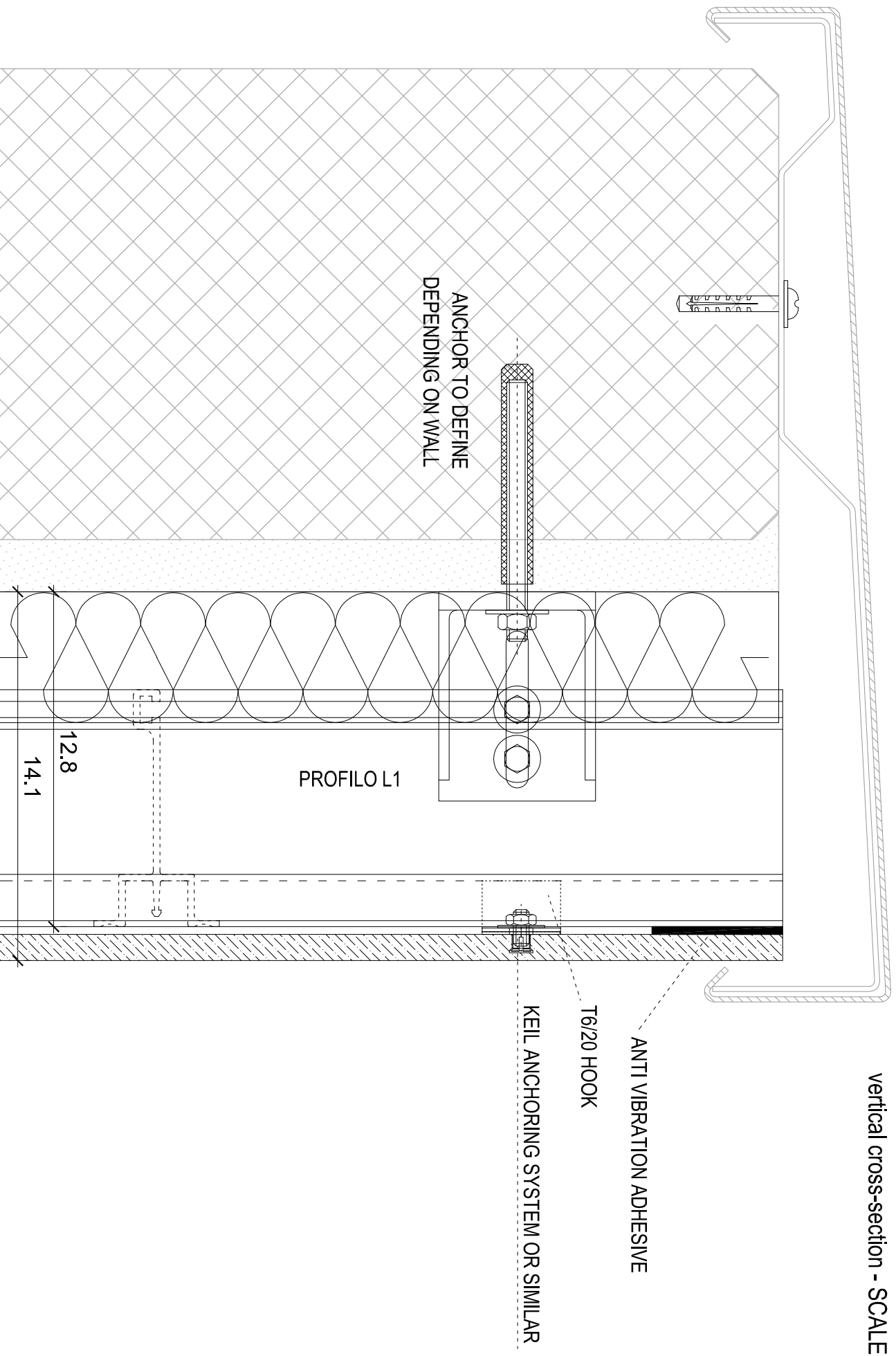
SINGLE BRACKET A12



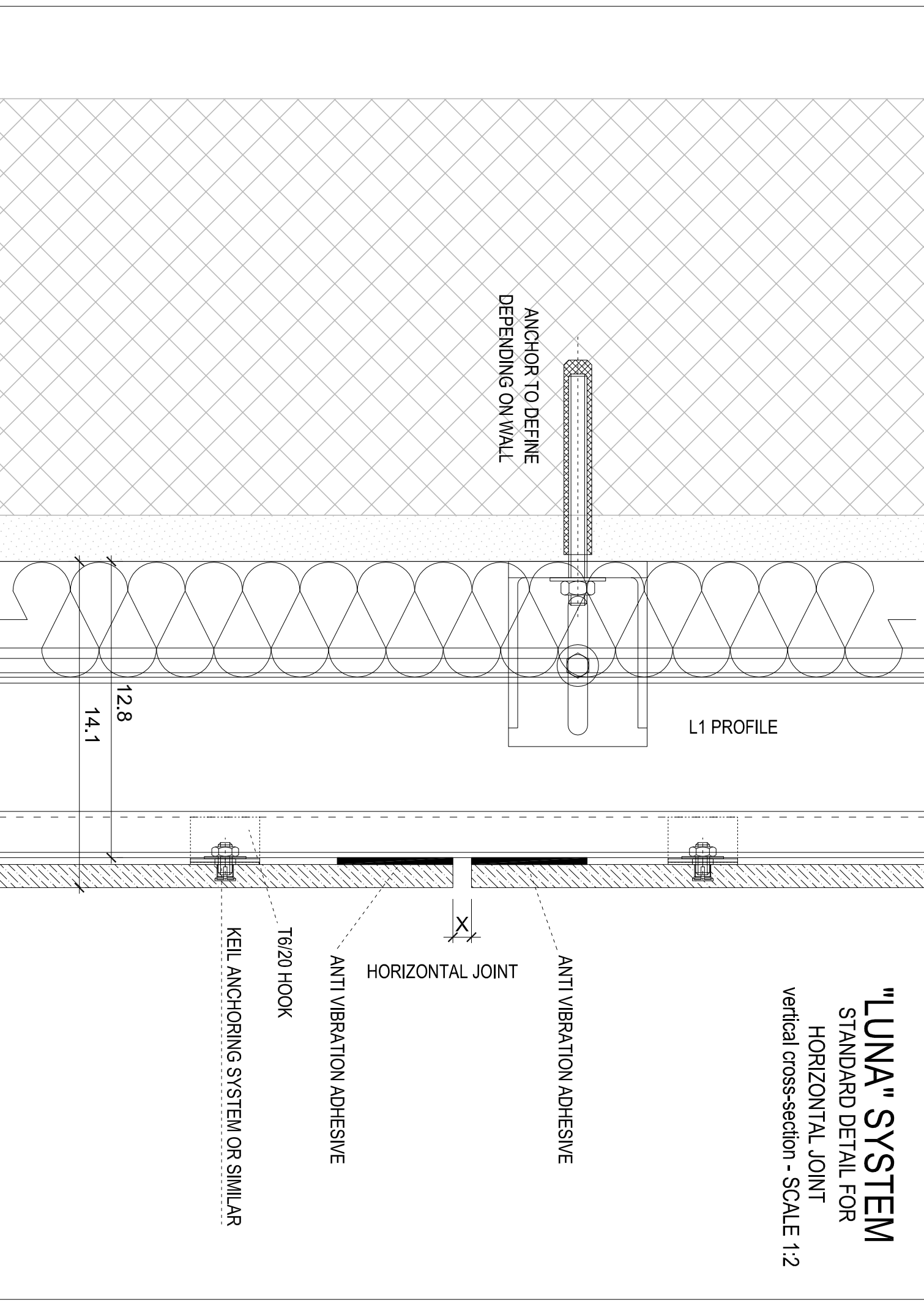
DOUBLE BRACKET B12

ALUMINIUM SHEET CLOSING

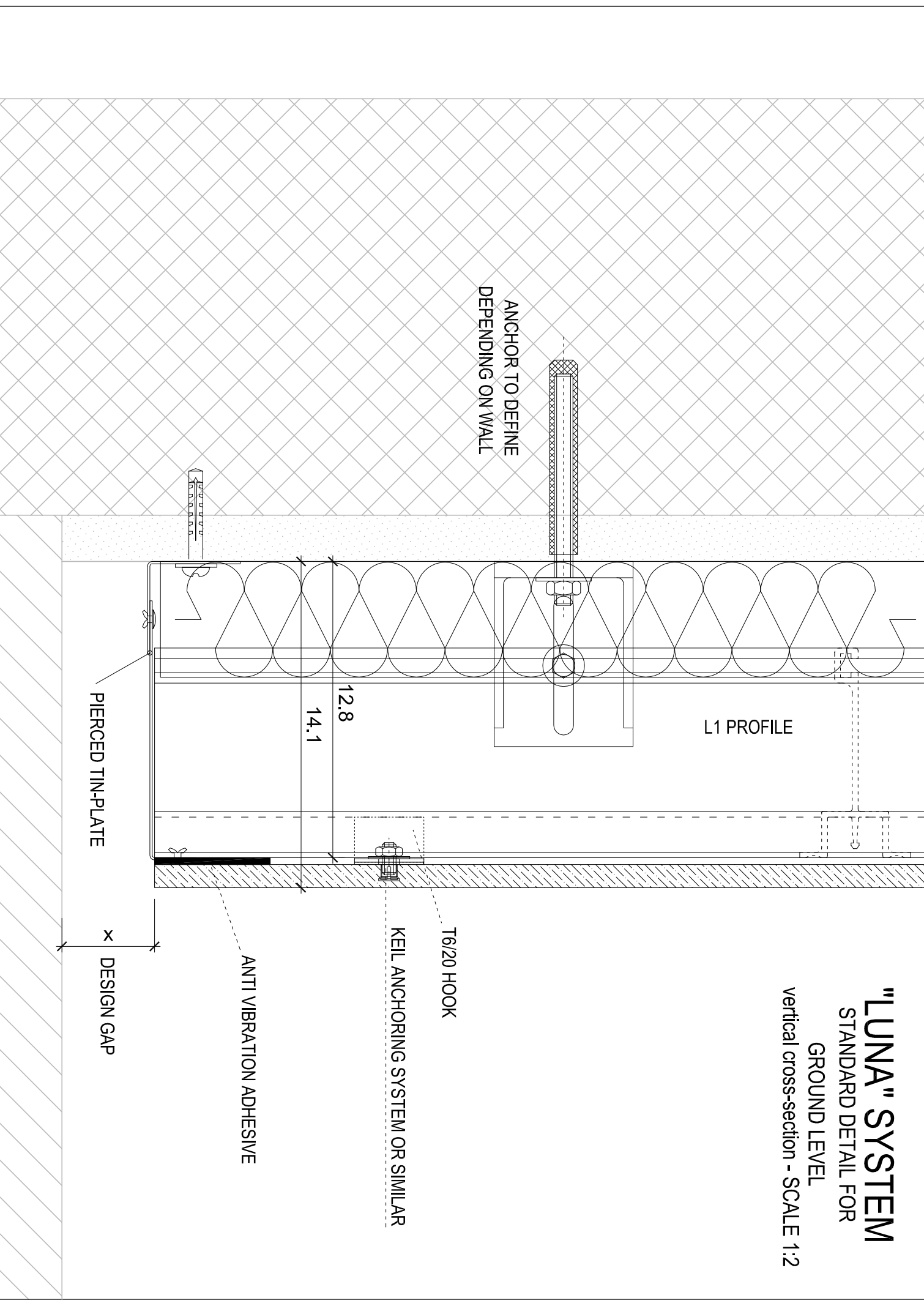
"LUNA" SYSTEM
STANDARD DETAIL FOR
FACADE TOP
vertical cross-section - SCALE 1:2



"LUNA" SYSTEM
STANDARD DETAIL FOR
HORIZONTAL JOINT
vertical cross-section - SCALE 1:2



"LUNA" SYSTEM
STANDARD DETAIL FOR
GROUND LEVEL
vertical cross-section - SCALE 1:2



ANCHOR TO DEFINE
DEPENDING ON WALL

L1 PROFILE

12.8

14.1

PIERCED TIN-PLATE

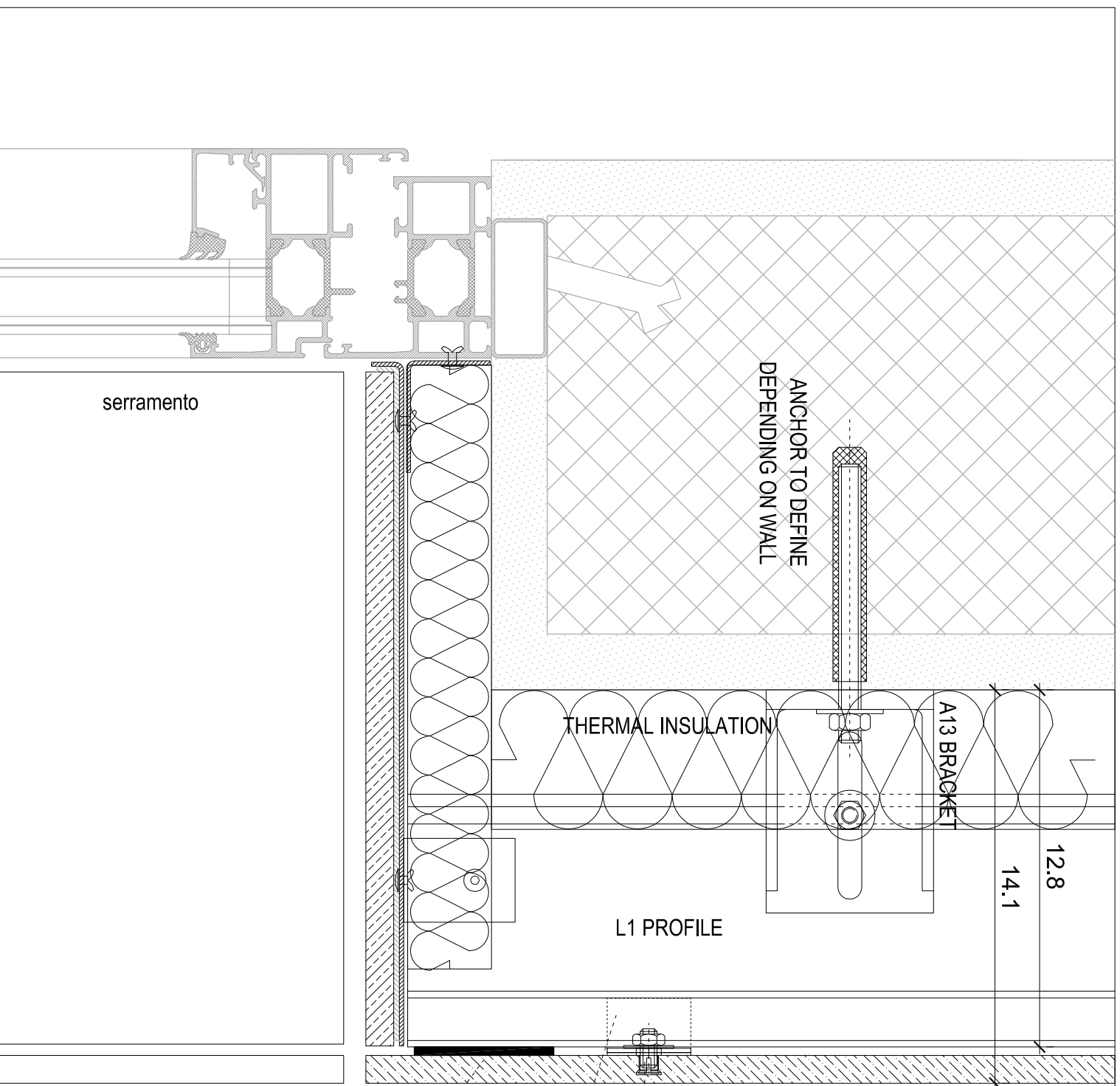
DESIGN GAP

ANTI VIBRATION ADHESIVE

KEIL ANCHORING SYSTEM OR SIMILAR

T6/20 HOOK

"LUNA" SYSTEM
STANDARD DETAIL FOR
WINDOW INTRADOS
vertical cross-section - SCALE 1:2



ANCHOR TO DEFINE
DEPENDING ON WALL

THERMAL INSULATION

A13 BRACKET

L1 PROFILE

12.8

14.1

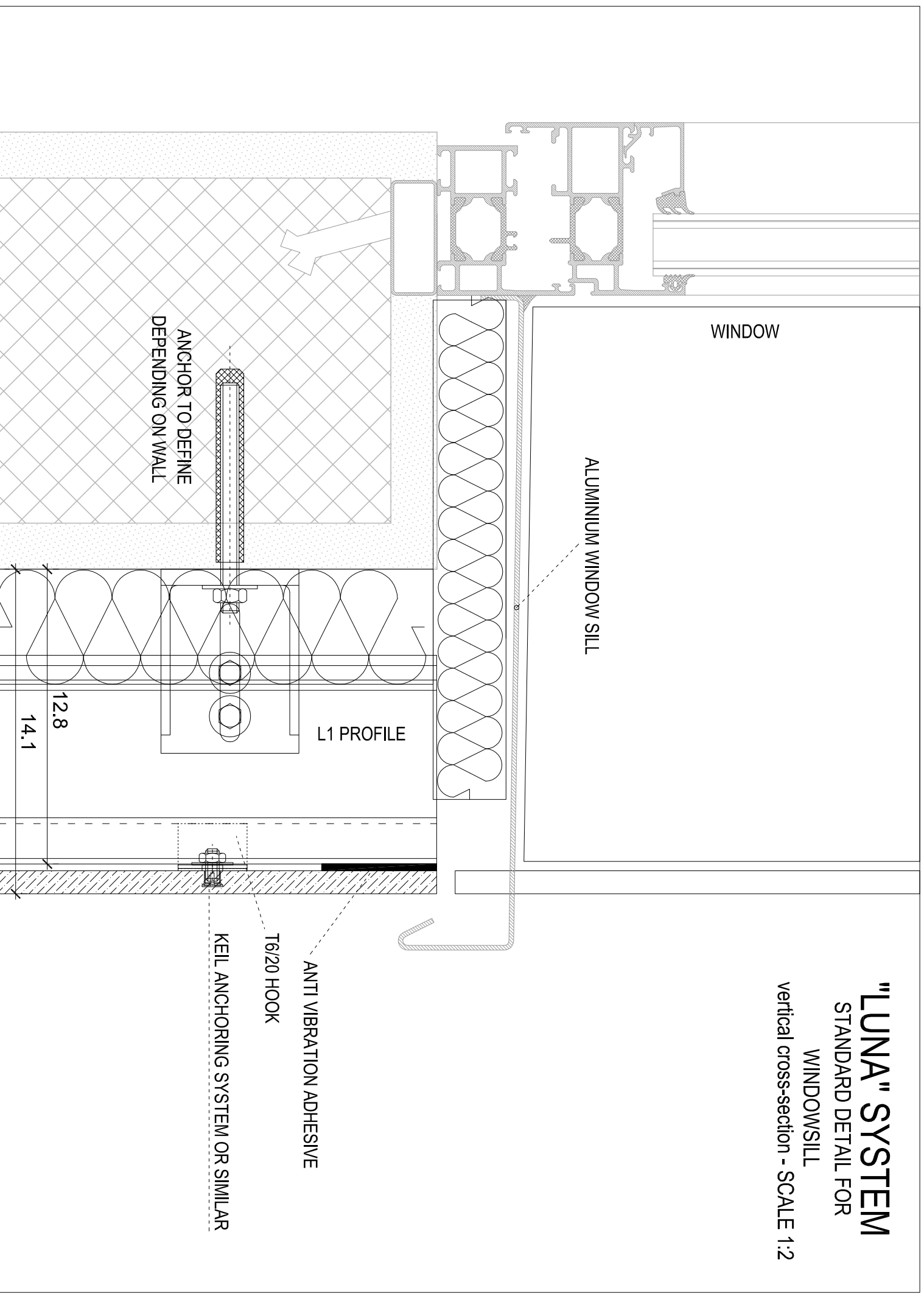
serramento

ANTI VIBRATION ADHESIVE

T6/20 HOOK

KEIL ANCHORING SYSTEM OR SIMILAR

"LUNA" SYSTEM
STANDARD DETAIL FOR
WINDOWSILL
vertical cross-section - SCALE 1:2

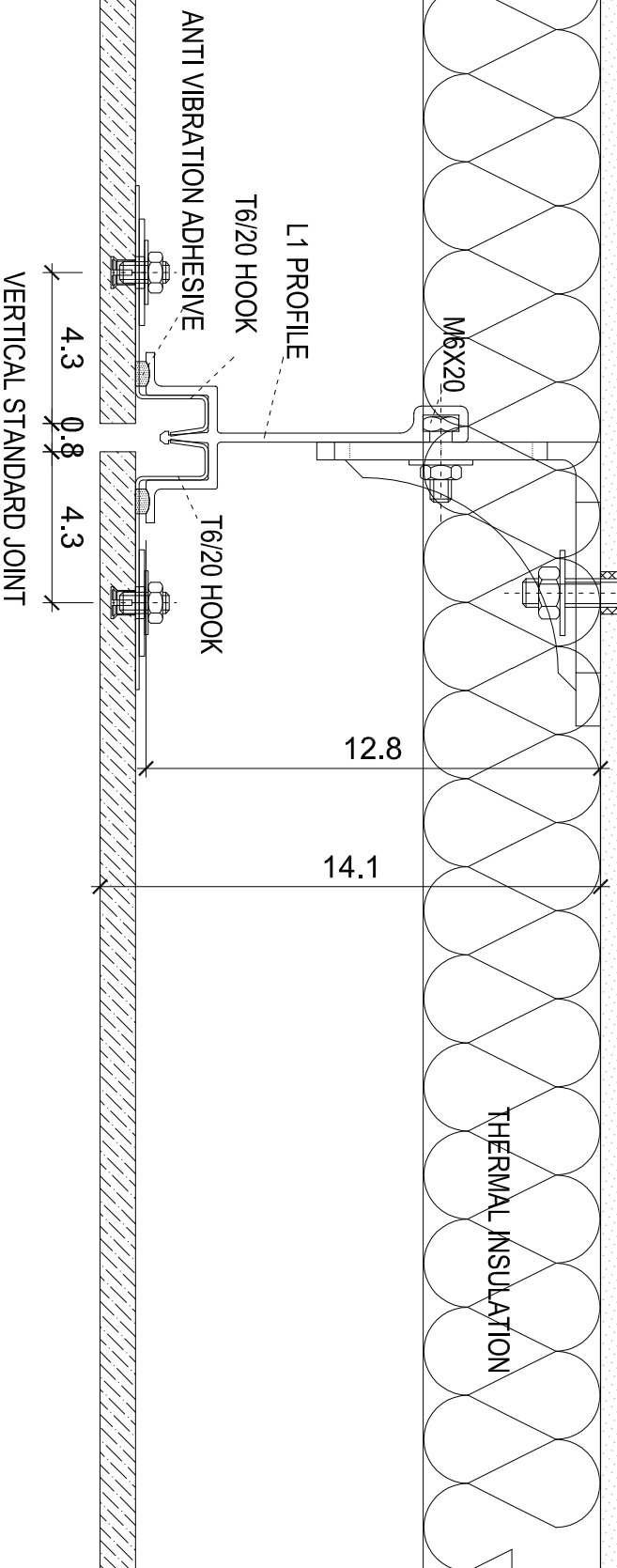


"LUNA" SYSTEM

STANDARD DETAIL FOR
VERTICAL JOINT

horizontal cross-section - SCALE 1:2

ANCHOR TO DEFINE
DEPENDING ON WALL

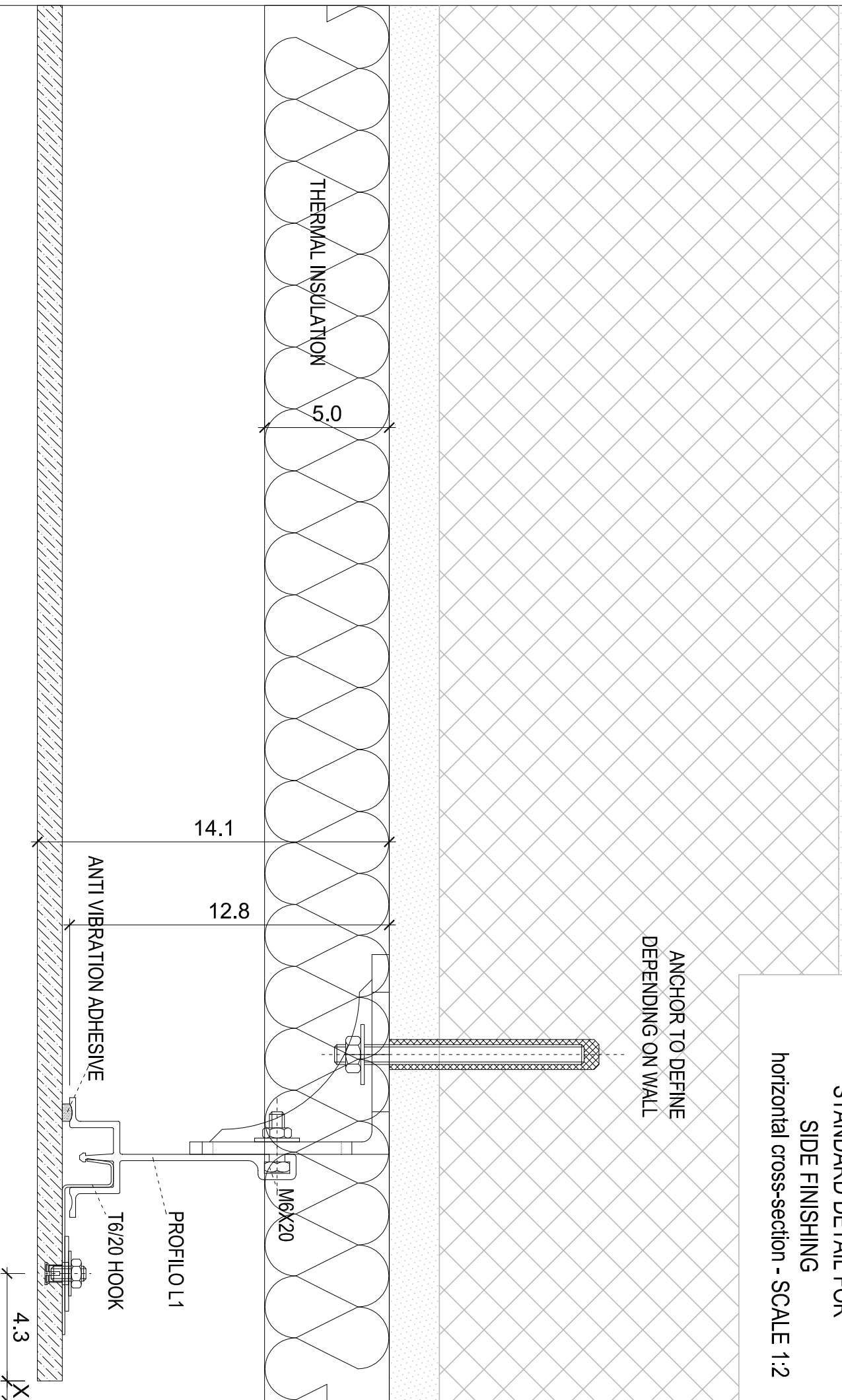


"LUNA" SYSTEM

STANDARD DETAIL FOR
SIDE FINISHING

horizontal cross-section - SCALE 1:2

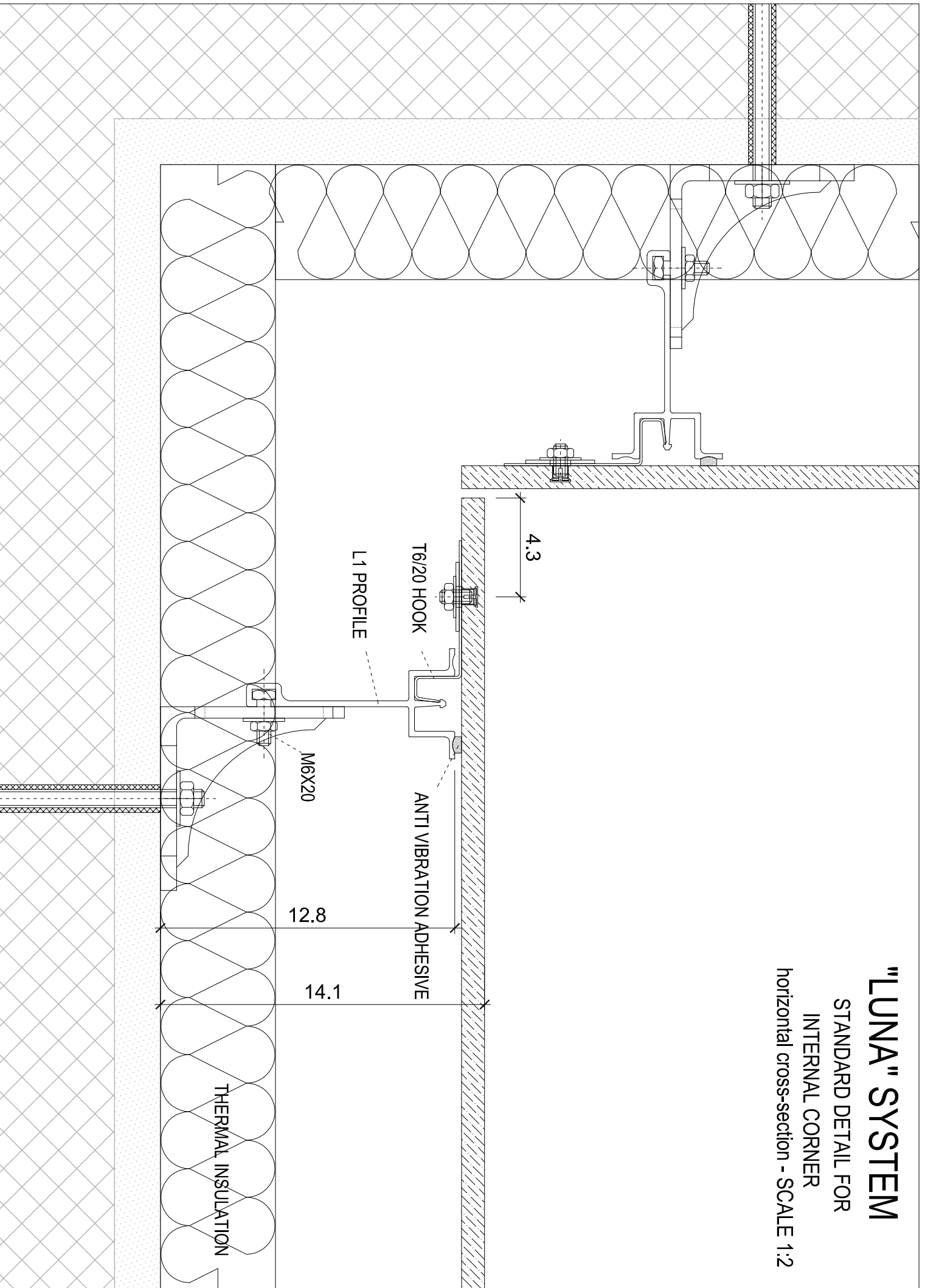
ANCHOR TO DEFINE
DEPENDING ON WALL



"LUNA" SYSTEM

STANDARD DETAIL FOR
INTERNAL CORNER

horizontal cross-section - SCALE 1:2



"LUNA" SYSTEM

PANEL SET-UP
vertical cross-section - SCALE 1:2

